

The Scala CA5-FM/CP/RM is a ruggedly built yagi antenna, designed for professional FM transmit and receive applications.

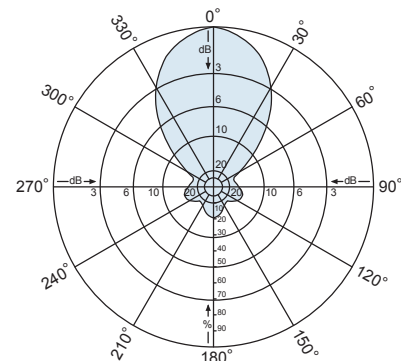
Like all Scala antennas, the CA5-FM/CP/RM is made of the finest materials using state of the art electrical and mechanical designs resulting in superior performance and long service life.

The CA5-FM/CP/RM may be used stand alone or in stacked arrays for higher gain, increased side-lobe suppression, or custom azimuth patterns.

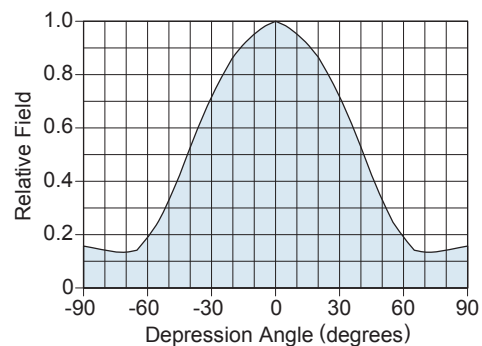
Specifications

Frequency range	Any specified FM channel 88 to 108 MHz
Gain	6 dBd
Power gain	3.98
Impedance	50 ohms
VSWR	<1.5:1
Polarization	Circular
Front-to-back ratio	>14 dB
Maximum input power	250 watts
H-plane beamwidth	61 degrees (half-power)
E-plane beamwidth	61 degrees (half-power)
Connector	N female
Weight	35 lb (15.9 kg)
Dimensions	79 x 56 x 50.8 inches maximum (2007 x 1422 x 1290 mm)
Wind load at 100 mph (161 kph)	
Front	98 lbf (436 N)
Wind survival rating*	120 mph (193 kph)
Shipping dimensions	84 x 13 x 8 inches (2134 x 330 x 203 mm)
Shipping weight	38 lb (17.2 kg)
Mounting	For masts of 2.375 inch (60 mm) OD.

*Mechanical design is based on environmental conditions as stipulated in TIA-222-G-2 (December 2009) and/or ETS 300 019-1-4 which include the static mechanical load imposed on an antenna by wind at maximum velocity. Contact KBU for further details.



Azimuth pattern

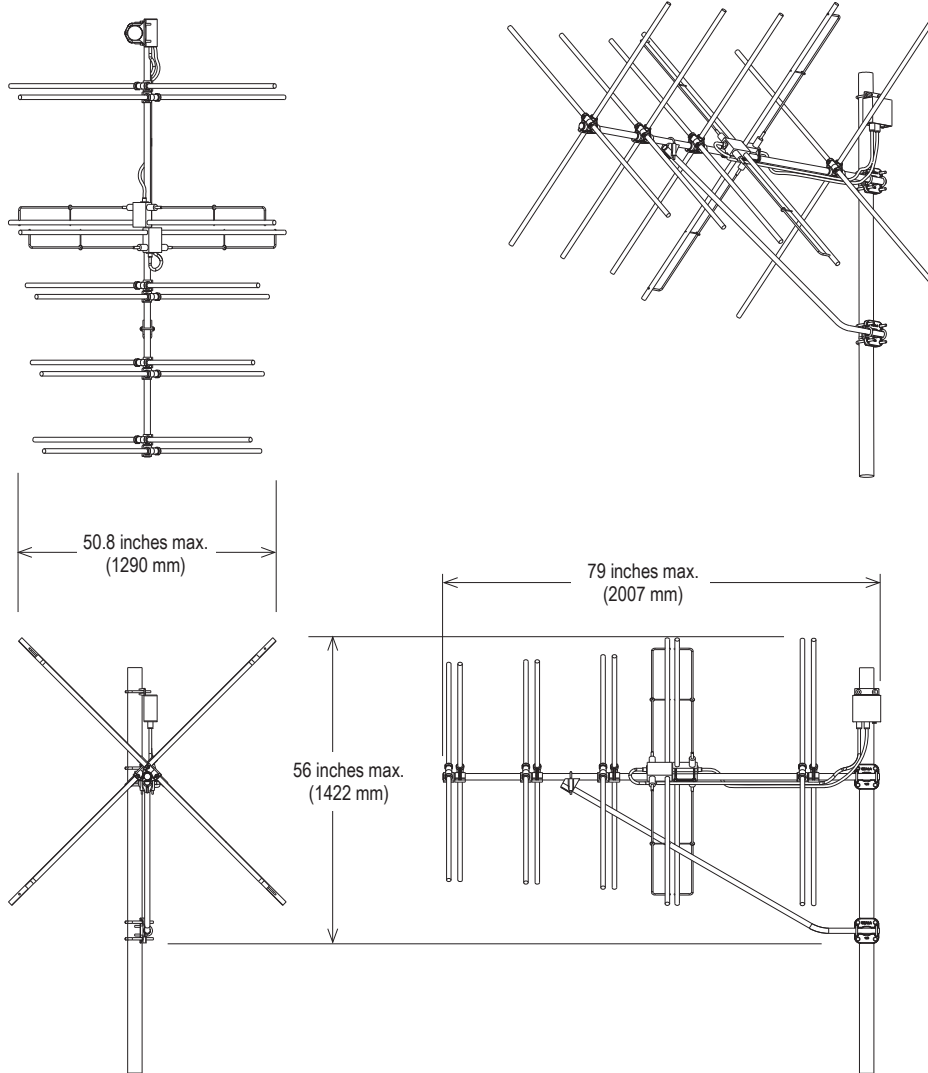


Elevation pattern (H-plane)



A Kathrein Broadcast Brand

CA5-FM/CP/RM FM Yagi Antenna 88—108 MHz



30053a subject to alteration

All specifications are subject to change without notice.
The latest specifications are available at www.kathrein-bca.com