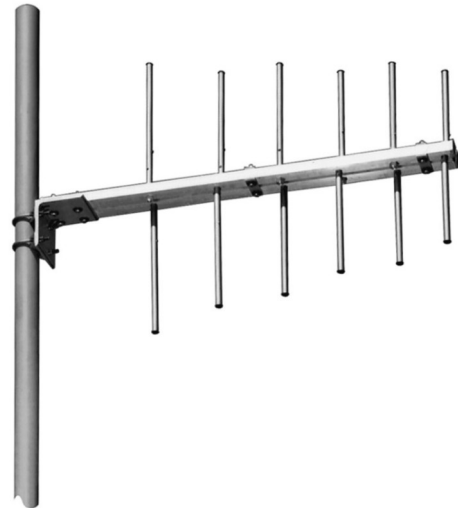


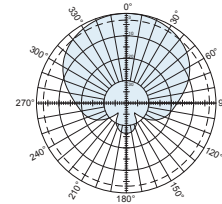
The Scala CL7-220 broadband log-periodic antenna is intended for use in professional fixed-station applications in the 216—225 MHz band. It features:

- Super heavy-duty construction.
- Anodized aluminum elements.
- Easy element replacement if necessary.
- Double boom of 1 x 1.5 inch rectangular aluminum tube.
- High front-to-back and front-to-side ratios.

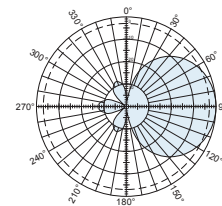


Specifications	
Frequency range	216—225 MHz (broadband)
Gain	7 dBd (9.15 dBi)
Impedance	50 ohms
VSWR	<1.5:1
Polarization	Vertical
Front-to-back ratio	>25 dB
Maximum input power	500 watts (at 50°C)
H-plane beamwidth	80 degrees (half-power)
E-plane beamwidth	52 degrees (half-power)
Connector	N female
Weight	12 lb (5.4 kg)
Dimensions	42 x 28.5 inches (1067 x 724 mm)
Equivalent flat plate area	1.2 ft ² (0.11 m ²)
Wind survival rating*	140 mph (225 kph)
Shipping dimensions	44 x 11 x 6 inches (1118 x 279 x 152 mm)
Shipping weight	16.0 lb (7.3 kg)
Mounting	For masts of 1.5 to 2.375 inch (51 to 60 mm) OD.

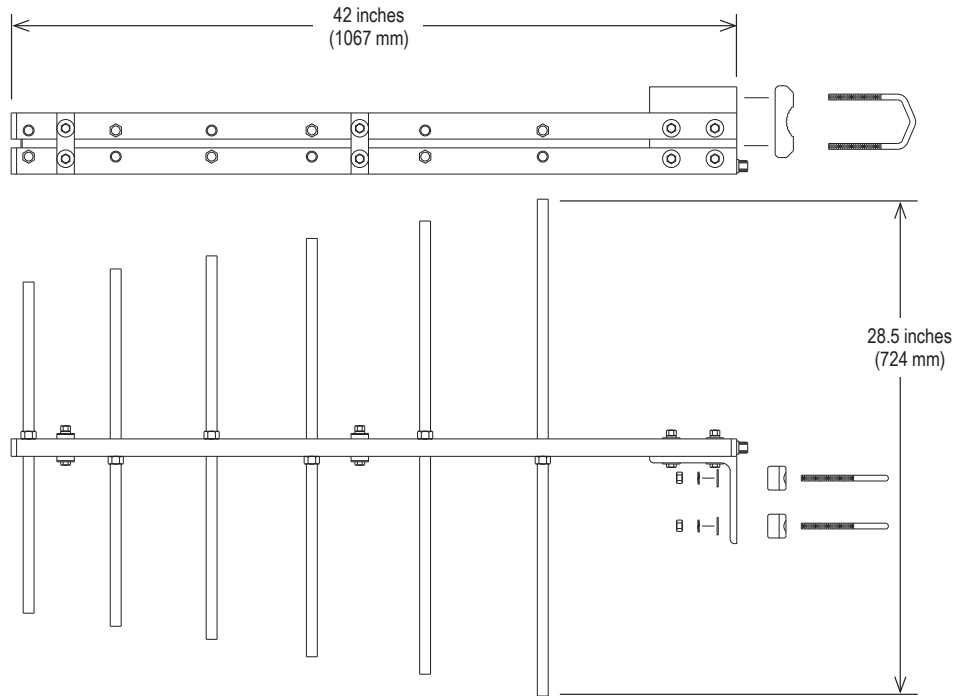
*Mechanical design is based on environmental conditions as stipulated in TIA-222-G-2 (December 2009) and/or ETS 300 019-1-4 which include the static mechanical load imposed on an antenna by wind at maximum velocity. Contact KBU for further details.



H-plane
Horizontal pattern — V-polarization



E-plane
Vertical pattern — V-polarization



30046a subject to alteration