

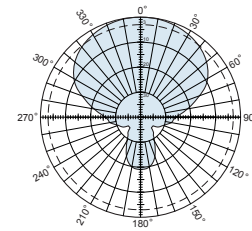
The Scala HP9-915 panel antenna offers a high performance and low VSWR solution for systems requiring horizontal polarization to solve co-channel and adjacent channel problems. This panel is useful for RF identification systems and telemetry in the 902-928 MHz ISM band. Arrays of this panel may also be used to create special patterns for systems requiring broader or narrower horizontal patterns than a single antenna provides.

- Fabricated from corrosion resistant aluminum and stainless steel, and all metal parts are DC grounded.
- Fiberglass radome insures reliable performance in heavy icing conditions.

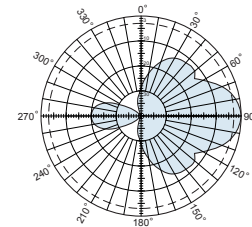


Specifications	
Frequency range	902-928 MHz
Gain	9.5 dBd (11.65 dBi)
Impedance	50 ohms
VSWR	<1.25:1
Polarization	Horizontal
Front-to-back ratio	>19 dB
Maximum input power	100 watts (at 50°C)
H-plane beamwidth	28 degrees (half-power)
E-plane beamwidth	76 degrees (half-power)
Connector	N female
Weight	11.5 lb (5.2 kg)
Dimensions	29 x 10.5 x 7 inches (737 x 267 x 178 mm)
Equivalent flat plate area	2.54 ft ² (0.236 m ²)
Wind survival rating*	120 mph (193 kph)
Shipping dimensions	30 x 11 x 9 inches (762 x 279 x 229 mm)
Shipping weight	14.25 lb (6.5 kg)
Mounting	For masts of 2.375 inches (60 mm) OD.

*Mechanical design is based on environmental conditions as stipulated in TIA-222-G-2 (December 2009) and/or ETS 300 019-1-4 which include the static mechanical load imposed on an antenna by wind at maximum velocity. Contact KBU for further details.

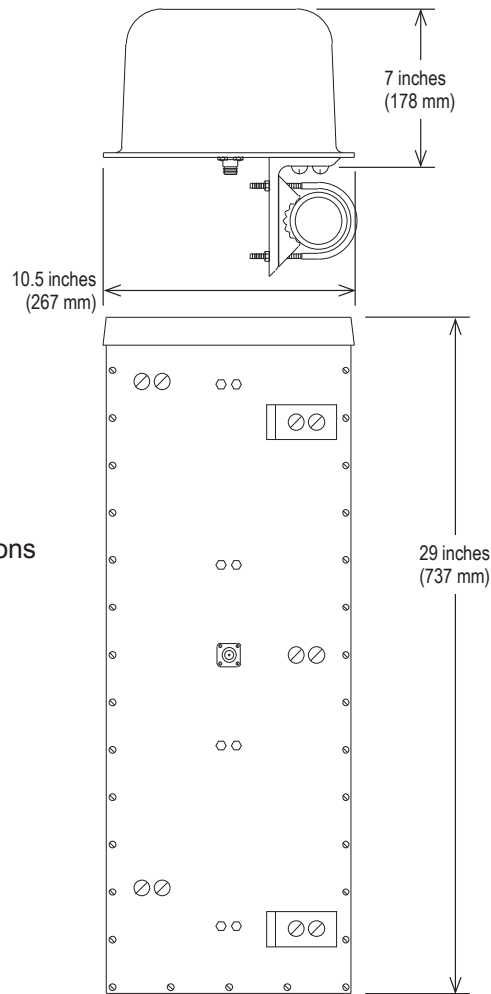


E-plane
Horizontal pattern — H-polarization



H-plane
Vertical pattern — H-polarization

HP9-915 Dimensions

**Order Information**

Model	Description
HP9-915N	Antenna with N connector