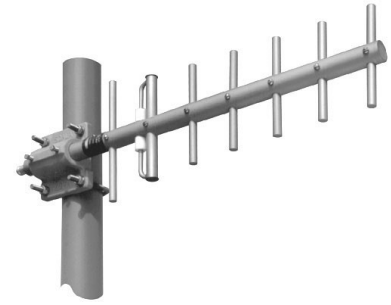


The Scala TY series are rugged broadband yagi antennas fabricated of aluminum rod and extruded pipe, anodized for maximum reliability and corrosion resistance. The hardware and fastenings are stainless steel. The internal balun, coax feed and connector are sealed in a foam potting system to prevent moisture penetration and assure long service life in severe environmental conditions. The heavy aluminum mounting casting allows installation for V or H polarization.

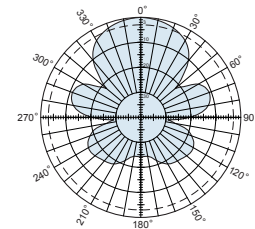
The TY-900 is specifically designed for professional fixed-station applications in the 890-960 MHz band.



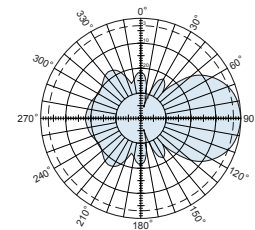
(Shown vertically polarized)

Specifications	
Frequency range	890—960 MHz
Gain	10 dBd (12.15 dBi)
Impedance	50 ohms
VSWR	<1.5:1 maximum (1.35:1 typical)
Polarization	Horizontal or vertical
Front-to-back ratio	>20 dB
Maximum input power	100 watts (at 50°C)
H-plane beamwidth	48 degrees (half-power)
E-plane beamwidth	40 degrees (half-power)
Connector	N female
Weight	3 lb (1.4 kg)
Dimensions	23 x 6.8 inches (584 x 173 mm)
Wind load at 93 mph (150 kph)	
Front / Side	3 lbf / 4 lbf (11 N / 17 N)
Wind survival rating*	150 mph (241 kph)
Shipping dimensions	
	28 x 10 x 4.5 inches (maximum) (711 x 254 x 114 mm)
Shipping weight	5 lb (2.3 kg)
Mounting	For masts of 1.5 to 2.375 inch (32 to 60 mm) OD.

* Mechanical design is based on environmental conditions as stipulated in TIA-222-G-2 (December 2009) and/or ETS 300 019-1-4 which include the static mechanical load imposed on an antenna by wind at maximum velocity. Contact KBU or further details.



H-plane
Horizontal pattern — V-polarization
Vertical pattern — H-polarization

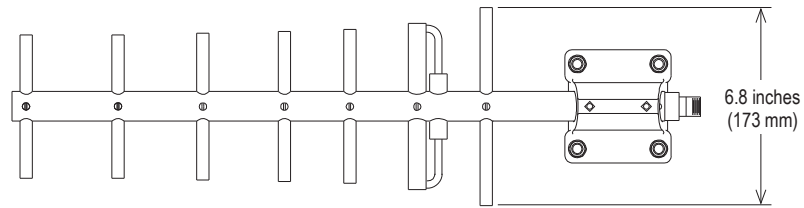
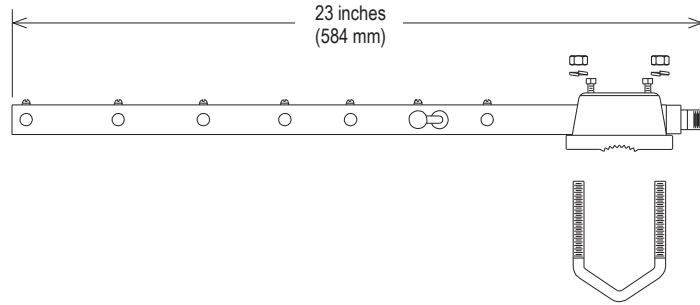


E-plane
Horizontal pattern — H-polarization
Vertical pattern — V-polarization



A Kathrein Broadcast Brand

TY-900
YAGI ANTENNA
890-960 MHz



30022a subject to alteration